



Calendar Problems

Here are the months February, March, July and August shown on a calendar:

February						
Mo	Tu	We	Th	Fr	Sa	Su
1	2	3	4	5	6	7
8	9	10	11	12	13	14
15	16	17	18	19	20	21
22	23	24	25	26	27	28
29	1	2	3	4	5	6
7	8	9	10	11	12	13

March						
Mo	Tu	We	Th	Fr	Sa	Su
29	1	2	3	4	5	6
7	8	9	10	11	12	13
14	15	16	17	18	19	20
21	22	23	24	25	26	27
28	29	30	31	1	2	3
4	5	6	7	8	9	10

July						
Mo	Tu	We	Th	Fr	Sa	Su
28	29	30	31	1	2	3
4	5	6	7	8	9	10
11	12	13	14	15	16	17
18	19	20	21	22	23	24
25	26	27	28	29	30	31
1	2	3	4	5	6	7

August						
Mo	Tu	We	Th	Fr	Sa	Su
1	2	3	4	5	6	7
8	9	10	11	12	13	14
15	16	17	18	19	20	21
22	23	24	25	26	27	28
29	30	31	1	2	3	4
5	6	7	8	9	10	11

Answer these questions about the calendar.

- 1) How many days will there be in this year? Explain how you know.

- 2) How many of the months shown here have 5 Mondays?

- 3) What day is 14th July?

- 4) What day is 26th January?





5) What day is 2nd September?

6) My birthday is on August 30th. Today is 2nd July. How many days do I need to wait?

7) Yesterday was 6th July. What will be the date in one week from today?

8) We are going on holiday on 23rd August. Today is 8th July. How many days do I have to pack my suitcase?





Calendar Problems **Answers**

Question	Answer
1. How many days will there be in this year? Explain how you know.	<i>366 days, because it is a leap year because there are 29 days in February.</i>
2. How many of the months shown here have 5 Mondays?	<i>2 months</i>
3. What day is 14th July?	<i>Thursday</i>
4. What day is 26th January?	<i>Tuesday</i>
5. What day is 2nd September?	<i>Friday</i>
6. My birthday is on August 30th. Today is 2nd July. How many days do I need to wait?	<i>59 days</i>
7. Yesterday was 6th July. What will be the date in one week from today?	<i>14th July</i>
8. We are going on holiday on 23rd August. Today is 8th July. How many days do I have to pack my suitcase?	<i>46 days</i>



Calendar Problems

Here are the months January and February shown on a calendar:

January						
Mo	Tu	We	Th	Fr	Sa	Su
28	29	30	31	1	2	3
4	5	6	7	8	9	10
11	12	13	14	15	16	17
18	19	20	21	22	23	24
25	26	27	28	29	30	31
1	2	3	4	5	6	7

February						
Mo	Tu	We	Th	Fr	Sa	Su
1	2	3	4	5	6	7
8	9	10	11	12	13	14
15	16	17	18	19	20	21
22	23	24	25	26	27	28
29	1	2	3	4	5	6
7	8	9	10	11	12	13

Answer these questions about the calendar.

1) Is this year a leap year? How do you know?

2) How many days would there be in this year - 364, 365 or 366 days?
Explain your answer.

3) How many Sundays are there in January?

4) How many Tuesdays are there in February?

5) What day is 22nd January?

6) What day is 23rd February?





7) Today is 19th January. I am going to the theatre on 30th January.
How many days away is that?

8) How many days are there from 28th January to 4th February?





Calendar Problems **Answers**

Question	Answer
1. Is this year a leap year? How do you know?	<i>It is a leap year because there are 29 days in February.</i>
2. How many days would there be in this year - 364, 365 or 366 days? Explain your answer.	<i>366 days because February has 29 days making it a leap year.</i>
3. How many Sundays are there in January?	<i>5 Sundays</i>
4. How many Tuesdays are there in February?	<i>4 Tuesdays</i>
5. What day is 22nd January?	<i>Friday</i>
6. What day is 23rd February?	<i>Tuesday</i>
7. Today is 19th January. I am going to the theatre on 30th January. How many days away is that?	<i>11 days</i>
8. How many days are there from 28th January to 4th February?	<i>7 days</i>



Calendar Problems

Here are the months January, February and March shown on a calendar:

January						
Mo	Tu	We	Th	Fr	Sa	Su
28	29	30	31	1	2	3
4	5	6	7	8	9	10
11	12	13	14	15	16	17
18	19	20	21	22	23	24
25	26	27	28	29	30	31
1	2	3	4	5	6	7

February						
Mo	Tu	We	Th	Fr	Sa	Su
1	2	3	4	5	6	7
8	9	10	11	12	13	14
15	16	17	18	19	20	21
22	23	24	25	26	27	28
29	1	2	3	4	5	6
7	8	9	10	11	12	13

March						
Mo	Tu	We	Th	Fr	Sa	Su
29	1	2	3	4	5	6
7	8	9	10	11	12	13
14	15	16	17	18	19	20
21	22	23	24	25	26	27
28	29	30	31	1	2	3
4	5	6	7	8	9	10

Answer these questions about the calendar.

1) Is this year a leap year? How do you know?

2) How many days are there in this year? Explain your answer.

3) How many Thursdays are there in March?

4) What day is 24th February?

5) What date is the second Friday in March?

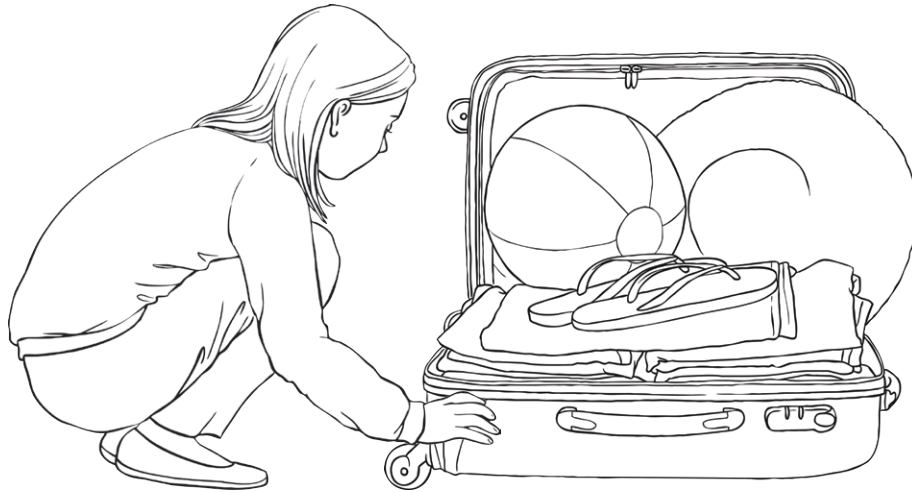
6) What day is February 24th?





7) Today is 26th January. My birthday is 19th February.
How many days do I have to wait?

8) I am going on holiday on 29th March. Today is 26th February. How many days do I have to pack my suitcase?





Calendar Problems **Answers**

Question	Answer
1. Is this year a leap year? How do you know?	
	<i>It is a leap year because there are 29 days in February.</i>
2. How many days are there in this year? Explain your answer.	
	<i>366 days because February has 29 days making it a leap year.</i>
3. How many Thursdays are there in March?	
	<i>5 days</i>
4. What day is 24th February?	
	<i>Wednesday</i>
5. What date is the second Friday in March?	
	<i>11th March</i>
6. What day is February 24th?	
	<i>Wednesday</i>
7. Today is 26th January. My birthday is 19th February. How many days do I have to wait?	
	<i>24 days</i>
8. I am going on holiday on 29th March. Today is 26th February. How many days do I have to pack my suitcase?	
	<i>32 days</i>